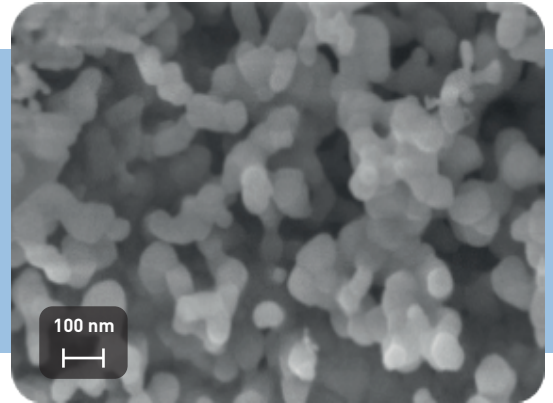


IBUpart®

ZrO₂-30



SEM of ZrO₂

TECHNICAL DATA

PROPERTIES		TESTING METHOD	
Specific surface area	(m ² /g)	30 ± 5	BET
Primary particle size	(nm)	30 - 70	SEM
Agglomerate size	(µm)	1 - 5	DLS
Colour		white	
Chrystallographic phase		tetragonal + monoclinic	XRD
Purity	(wt.-%)	> 99	ICP
Bulk density	(kg/m ³)	500	

POTENTIAL APPLICATIONS

- Grinding and polishing agents
- 3D printing