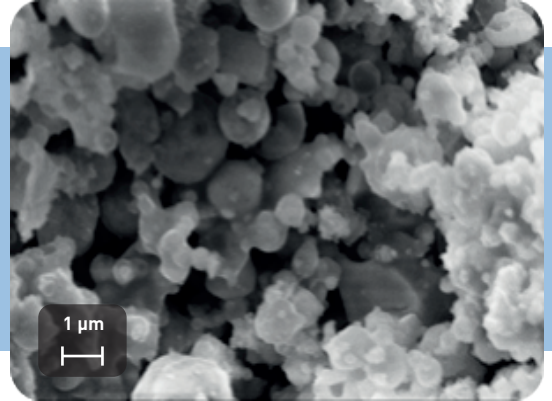


IBUpart®

Y-AlO₃-10



SEM of Y-AlO₃

TECHNICAL DATA

PROPERTIES		TESTING METHOD	
Specific surface area	(m ² /g)	12 ± 2	BET
Primary particle size	(nm)	100 - 1000	SEM
Agglomerate size	(μm)	1 - 2	DLS
Colour		grey	
Chrystallographic phase		Y-AlO ₃	XRD
Purity	(wt.-%)	57.05 Y ₂ O ₃ 42.95 Al ₂ O ₃	ICP
Bulk density	(kg/m ³)	200 - 300	

POTENTIAL APPLICATIONS

- Light sources
- LEDs
- Lasers